

Titanic data

name Full Name (LAST, Title First)
sex Sex (text, male/female)
age Age
class Passenger Class (1 = 1st; 2 = 2nd; 3 = 3rd)
survived Survived indicator (0 = No; 1 = Yes)
joined Port of embarkation (Belfast, Cherbourg, Queenstown,
Southampton)
sibsp Number of Siblings/Spouses Aboard
price Price of ticket, Pounds
occupation Job / Career
:

Age [years]

[1] 29 2 25 62 53 18 24 26 32 50 46 39 46 31 19 30 61 45 22 59
[21] 44 58 41 52 58 13 36 36 25 47 32 36 30 48 26 22 39 64 55 39
[41] 64 35 33 27 17 34 48 27 48 23 39 54 36 48 42 24 28 23 60 31
[61] 42 22 48 22 44 35 40 19 59 45 21 49 35 24 52 17 44 51 35 31
[81] 39 50 40 45 49 27 55 16 50 21 59 16 18 25 33 37 31 23 19 39
[101] 22 22 22 33 56 43 33 33 54 18 21 48 24 35 30 40 39 18 23 39
[121] 45 44 52 62 63 46 18 39 49 39 38 35 60 55 31 45 50 21 31 36
[141] 35 29 19 24 28 36 36 22 4 12 35 19 18 15 40 20 36 40 28 35
[161] 45 28 25 45 28 8 31 22 30 30 48 28 24 18 34 34 27 30 38 39
[181] 23 6 7 48 23 23 48 56 18 20 54 29 61 17 24 23 24 28 46 45
[201] 34 1 3 22 17 31 46 42 57 24 13 41 14 29 59 21 19 32 2 8
[221] 33 30 28 24 58 21 17 20 29 30 39 48 27 27 26 36 31 12 40 37
[241] 37 4 29 0 4 33 35 26 24 25 39 16 40 18 19 6 2 17 38 9
[261] 11 39 18 5 38 45 17 15 33 3 0 5 24 18 31 18 45 26 7 40
[281] 40 32 22 20 22 17 21 30 22 18 45 23 41 16 36 16 22 33 28 34
[301] 36 0 32 19 21 31 28 27 24 22 5 22 20 7 54 38 17 19 31 10
[321] 16 43 24 24 45 17 21 29 18 26 23 22 28 21 2 22 27 26 18 27
[341] 25 16 19 26 1 26 7 35 20 21 4 20 22 20 22 4 26 1 36 37
[361] 22 3 8 12 40 25 45 30 26 23 21 20 32 28 24 29 26 31 22 17
[381] 42 19 32 63 31 23 29 28 35 24 21 18 25 18 25 34 22 15 1 19
[401] 21 29 18 26 14 22 26 25 22 16 31 23 20 21 3 8 29 41 3 26
[421] 2 24 26 28 18 63 39 22 18 58 47 2 41 31 7 14 10 20 44 21
[441] 1 4 24 20 18 9 2 43 17 24 22 2 29 16 32 9 27 18 63 10
[461] 30 18 31 14 47 15

Age [years]

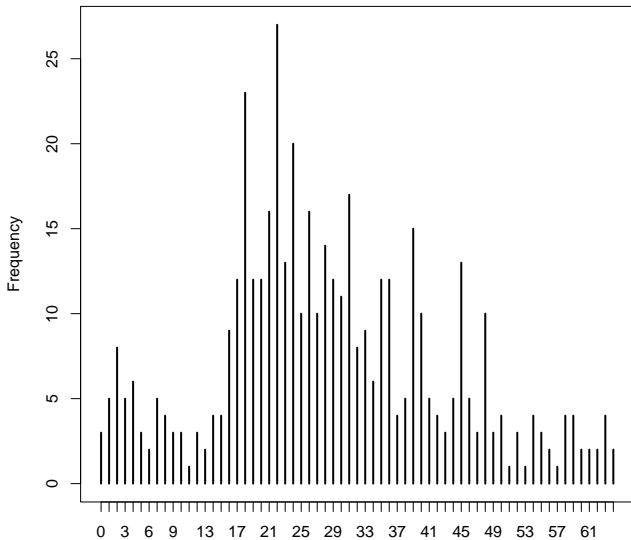
[1]	0	0	0	1	1	1	1	1	2	2	2	2	2	2	2	2	3	3	3	3
[21]	3	4	4	4	4	4	4	5	5	5	6	6	7	7	7	7	7	8	8	8
[41]	8	9	9	9	10	10	10	11	12	12	12	13	13	14	14	14	14	15	15	15
[61]	15	16	16	16	16	16	16	16	16	16	17	17	17	17	17	17	17	17	17	17
[81]	17	17	18	18	18	18	18	18	18	18	18	18	18	18	18	18	18	18	18	18
[101]	18	18	18	18	18	19	19	19	19	19	19	19	19	19	19	19	19	20	20	20
[121]	20	20	20	20	20	20	20	20	20	21	21	21	21	21	21	21	21	21	21	21
[141]	21	21	21	21	21	22	22	22	22	22	22	22	22	22	22	22	22	22	22	22
[161]	22	22	22	22	22	22	22	22	22	22	22	22	22	22	22	22	22	22	22	22
[181]	23	23	23	23	23	24	24	24	24	24	24	24	24	24	24	24	24	24	24	24
[201]	24	24	24	24	24	25	25	25	25	25	25	25	25	25	25	25	25	26	26	26
[221]	26	26	26	26	26	26	26	26	26	26	26	26	27	27	27	27	27	27	27	27
[241]	27	28	28	28	28	28	28	28	28	28	28	28	28	28	28	28	29	29	29	29
[261]	29	29	29	29	29	29	29	30	30	30	30	30	30	30	30	30	30	30	30	31
[281]	31	31	31	31	31	31	31	31	31	31	31	31	31	31	31	31	32	32	32	32
[301]	32	32	32	33	33	33	33	33	33	33	33	33	33	34	34	34	34	34	34	35
[321]	35	35	35	35	35	35	35	35	35	35	35	36	36	36	36	36	36	36	36	36
[341]	36	36	37	37	37	37	38	38	38	38	38	38	39	39	39	39	39	39	39	39
[361]	39	39	39	39	39	39	40	40	40	40	40	40	40	40	40	40	40	41	41	41
[381]	41	42	42	42	42	43	43	43	44	44	44	44	44	45	45	45	45	45	45	45
[401]	45	45	45	45	45	45	46	46	46	46	46	46	47	47	47	48	48	48	48	48
[421]	48	48	48	48	49	49	49	50	50	50	50	51	52	52	52	53	54	54	54	54
[441]	55	55	55	56	56	57	58	58	58	58	59	59	59	59	60	60	61	61	62	62
[461]	63	63	63	63	64	64														

age	Frequency	Relative frequency	Cumulative relative frequency	Percentage
0	3	0.01	0.01	0.64
1	5	0.01	0.02	1.07
2	8	0.02	0.03	1.72
3	5	0.01	0.05	1.07
4	6	0.01	0.06	1.29
5	3	0.01	0.06	0.64
6	2	0.00	0.07	0.43
7	5	0.01	0.08	1.07
8	4	0.01	0.09	0.86
9	3	0.01	0.09	0.64
10	3	0.01	0.10	0.64
11	1	0.00	0.10	0.21
12	3	0.01	0.11	0.64
13	2	0.00	0.11	0.43
14	4	0.01	0.12	0.86
15	4	0.01	0.13	0.86
16	9	0.02	0.15	1.93
17	12	0.03	0.18	2.58
18	23	0.05	0.23	4.94
19	12	0.03	0.25	2.58
20	12	0.03	0.28	2.58
21	16	0.03	0.31	3.43
22	27	0.06	0.37	5.79
23	13	0.03	0.40	2.79
24	20	0.04	0.44	4.29
25	10	0.02	0.46	2.15
26	16	0.03	0.49	3.43
27	10	0.02	0.52	2.15
28	14	0.03	0.55	3.00
29	12	0.03	0.57	2.58
30	11	0.02	0.60	2.36
31	17	0.04	0.63	3.65
32	8	0.02	0.65	1.72

age	Frequency	Relative frequency	Cumulative relative frequency	Percentage
33	9	0.02	0.67	1.93
34	6	0.01	0.68	1.29
35	12	0.03	0.71	2.58
36	12	0.03	0.73	2.58
37	4	0.01	0.74	0.86
38	5	0.01	0.75	1.07
39	15	0.03	0.79	3.22
40	10	0.02	0.81	2.15
41	5	0.01	0.82	1.07
42	4	0.01	0.83	0.86
43	3	0.01	0.83	0.64
44	5	0.01	0.84	1.07
45	13	0.03	0.87	2.79
46	5	0.01	0.88	1.07
47	3	0.01	0.89	0.64
48	10	0.02	0.91	2.15
49	3	0.01	0.92	0.64
50	4	0.01	0.92	0.86
51	1	0.00	0.93	0.21
52	3	0.01	0.93	0.64
53	1	0.00	0.94	0.21
54	4	0.01	0.94	0.86
55	3	0.01	0.95	0.64
56	2	0.00	0.95	0.43
57	1	0.00	0.96	0.21
58	4	0.01	0.97	0.86
59	4	0.01	0.97	0.86
60	2	0.00	0.98	0.43
61	2	0.00	0.98	0.43
62	2	0.00	0.99	0.43
63	4	0.01	1.00	0.86
64	2	0.00	1.00	0.43

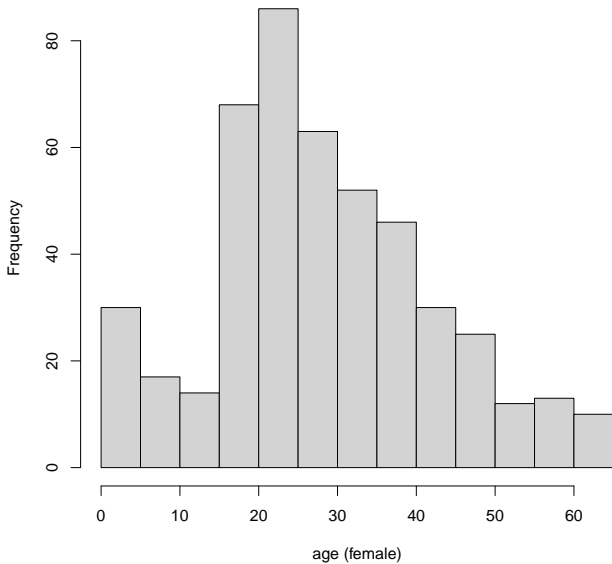
Bar plot

age (female)

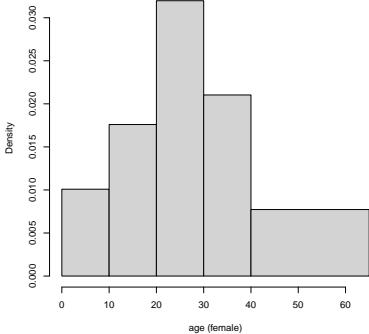
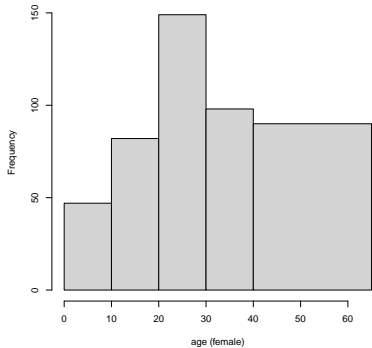


	Frequency
[0,5]	30
(5,10]	17
(10,15]	14
(15,20]	68
(20,25]	86
(25,30]	63
(30,35]	52
(35,40]	46
(40,45]	30
(45,50]	25
(50,55]	12
(55,60]	13
(60,65]	10
	466

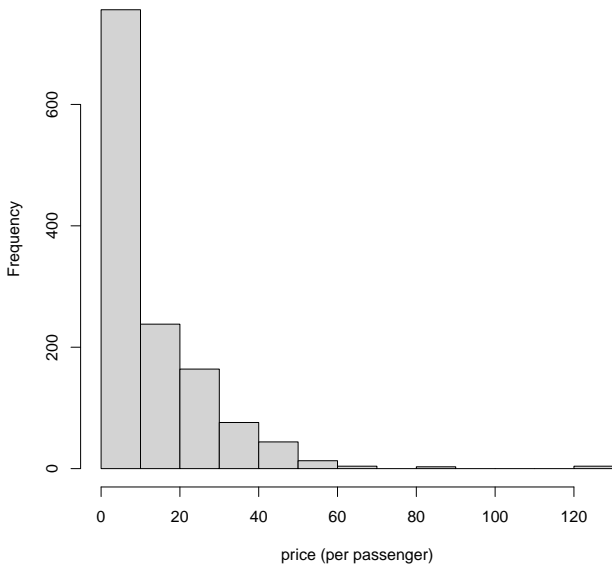
Histogram



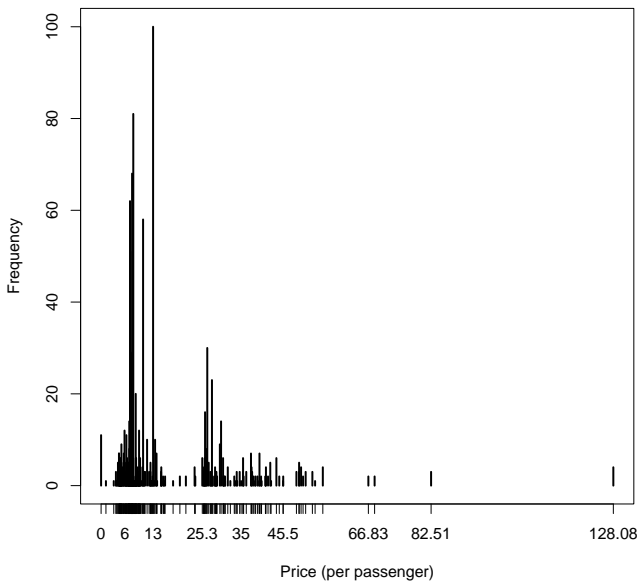
	Frequency	Rel. freq.
[0,10]	47	0.10
(10,20]	82	0.18
(20,30]	149	0.32
(30,40]	98	0.21
(40,65]	90	0.19



Right skewed frequency distribution



Outliers



Boxplot

